

Governance Framework Introduction

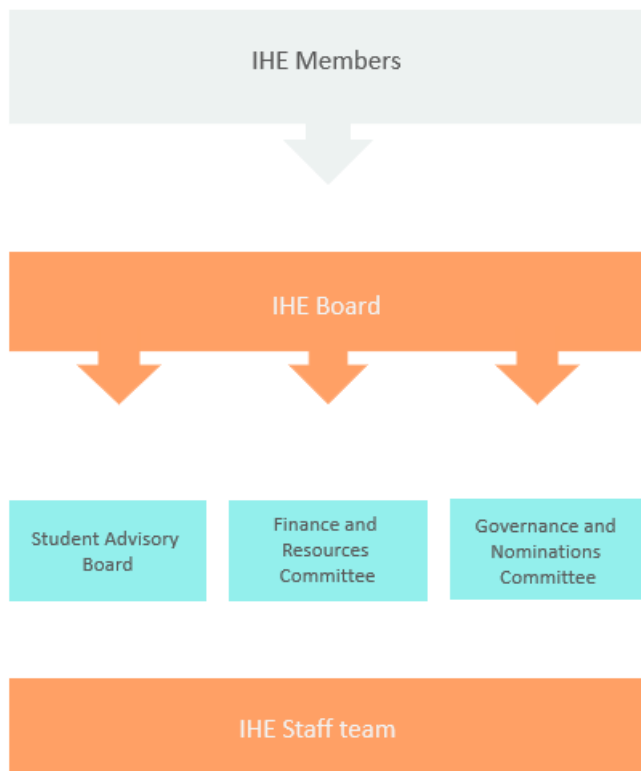
Independent Higher Education recognises that good corporate governance is critical to any organisation and our governance arrangements are fundamental to ensuring that we achieve our objectives and live up to our values.

IHE's formal constitution is established in our Articles of Association, which set out our Objects (the purpose of the company) and the high-level rules by which we are governed, including those relating to membership, the composition and appointment of the Board, and the powers reserved to the members themselves and those which can be delegated.

IHE has a further set of regulations which support the Articles. These regulations set out the responsibilities and procedures we use for the efficient and effective running of the organisation. The Articles of Association and all regulations that support it are published on our website as part of our commitment to transparency, and will be regularly reviewed to ensure that we continue to reflect best practice.

The Board structure

IHE has a Board of Directors with two supporting committees and one advisory board. The Board is predominantly made up of leaders of member institutions who are elected by the membership. The Board may also co-opt non-member Directors, who may fulfil specific roles such as Honorary Treasurer, Chair of the Governance and Nominations Committee, and Independent Student Board Member.



As a collective, IHE's member institutions form the supreme decision-making body, which meets at least once per year to receive the statutory accounts and elect the IHE Board.

Responsibility for most business decisions during the course of the year is delegated to the IHE Board, including the approval of the strategic plan, annual budget and internal (organisational) policy, as well as the monitoring of performance and progress.

The IHE Board has two sub-committees and a Student Advisory Board (SAB), each of which have a specific remit to guide and advise the staff team and Board.

The implementation of the strategic plan, the financial management of the business, and administration of the policy development process are delegated to the Chief Executive and Senior Management Team.

Full details may be found in the Articles, scheme of delegation, and terms of reference of the Board and Committees.

Numbered Regulations of Independent Higher Education (IHE Rules)

Constitution and Governance Framework

- CG1 - Framework Introduction
- CG2 - Articles of Association
- CG3 - Scheme of Delegation
- CG4 - Terms of Reference for the Board
- CG5 - Terms of Reference for the GNC
- CG6 - Terms of Reference for the FRC
- CG7 - Terms of Reference for the SAB

Membership Regulations

- M1 - Eligibility for Membership
- M2 - Conditions of Membership
- M3 - Mission and Values
- M4 - Code of Conduct for Members
- M5 - Regulation, accreditation and external quality assurance
- M6 - Fit and proper persons test
- M7 - Membership subscriptions
- M8 - Annual Declarations and mid-year reporting
- M9 - Applications for Membership
- M10 - Probation, suspension and termination of Membership

Governance Roles

- GR1 - Role profile for Chair of the Board
- GR2 - Role profile for Vice Chair of the Board
- GR3 - Role profile for Chair of the GNC
- GR4 - Role profile for Chair of the FRC / Honorary Treasurer
- GR5 - Role profile for Independent Student Board Member
- GR6 - Skills self-assessment form for Board and Committee Members
- GR7 - Fit and proper persons and declarations of interest forms
- GR8 - Code of Conduct for Board and Committee Members

Governance Processes

- GP1 - Board elections
- GP2 - Appointment of the Chair and Vice Chair
- GP3 - Board and Committee appointments
- GP4 - Member community appointments
- GP5 - Standing Orders for General Meetings